

Welcome to your Almshouse News

News

Sports Quiz

Date for your
Diary

Poem

DURING CORONAVIRUS LOCKDOWN

Entertainment
Quiz

Reflections

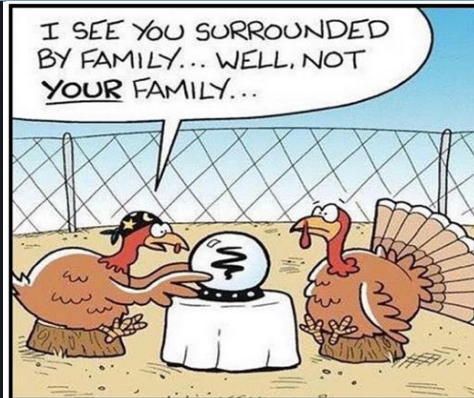
WELCOME

History Quiz

Wordsearch

Poetry Corner

NURSE CAME IN AND SAID DOC, THERE'S A MAN IN THE WAITING ROOM WHO THINKS HE'S INVISIBLE, WHAT SHOULD I TELL HIM? THE DOCTOR SAID TELL HIM I CAN'T SEE HIM TODAY.



We'll Be Friends 'Til We're Old & Senile ... Then We'll Be New Friends!



WARNING

There is an email going around offering processed pork, gelatin and salt in a can.

If you get this email, do not open it. It's spam.



STAY ALERT 

CONTROL THE VIRUS

 **SAVE LIVES**

Please Don't Feed the Wildlife



by Juliet Ames-Lewis

I would like to remind residents that it is not permitted to feed local wildlife – animals or birds – as it encourages rats around our estates.

Contents

News	2 - 4
Entertainment Quiz	5
Songs & Poetry	6
Sports Quiz	7
History Quiz Continued...	8
Wordsearch	9
Answer Page	10
Lest We Forget	11
Poetry Corner	12

NEWSFLASH – A Date and Time for a Social Event for your Diaries

(what's a Diary?!)

Event: Eve 'n' Steve's VIRTUAL Quiz

Date: Thursday 2 July

Time: 3pm

Back by popular demand, on Thursday 2nd July at 3pm we will be holding Eve 'n' Steve's VIRTUAL quiz afternoon! More details will follow in next week's Almshouse News about how it will work, but please get your teams together now! Here are some rules:

- *Maximum of 6 in a team
- *Only residents, staff and trustees allowed
- *You need a group name and a group leader who has an email address in order to receive the questions from Steve and Eve
- *Please email your group name, leader and names of group members through to Steve at steveharbud@icloud.com
- *Groups can either meet in almshouse gardens (at 2m distance) or you can convene your group on Zoom or Skype
- *No cheating using Google!

I hope that lots of residents will join in and support our first social event for some months. Huge thanks to Steve and Eve for getting the quiz ready.

Face Masks



by **Debbie Flaherty**

As you are all aware we now have to wear a mask to cover our faces on public transport and it is also a good idea to wear one in shops or when out in public within close proximity of others.

The mask should be made of a washable cloth fabric. I wanted to mention that there are lots of tutorials or patterns online if you are interested in making your own.



Alternatively you can use a scarf around your face. I will have some fabric masks in the office which have been kindly made by one of our residents which are being sold for £5 so if any of you are interested in these please call me on **0208 439 9394**. I have purchased two and they are perfect and very well made. There is a limited stock of these depending on availability of materials.

In addition, we have been just been given, as a donation, through a contact of Juliet's a huge number of fabric washable masks – so we will be able to distribute masks to you all.

Keep covered. Keep safe.

Two pleas from our wonderful and hard-working maintenance team:



by **Juliet Ames-Lewis**

Firstly, despite notices to the contrary, some residents are leaving plastic plants pots in the compost areas. These items should be put into your household waste please.

And secondly, we have yet again had a couple of sewer blockages recently due to the use of cushioned or 3 ply toilet paper. The old drains at the almshouse estates cannot cope with cushioned or 3 ply paper as it causes blockages at the bends of the pipes.

Please can all residents use a maximum of 2 ply.

A reminder too that wet wipes must not be flushed down the toilet.



Well Done Almshouse Knitters



by Linda Prendergast

The latest batch of Teddies has been delivered!! This time to our wonderful London Ambulance Service who were absolutely thrilled to receive them.

I am so grateful to all the residents who continue to knit these little bears. I would also like to say a huge thank you to Leslie Cook who hand made the fantastic thank you cards that were delivered with each bear (below).

THANK YOU!



*~ to the heroic
front line fighters
ever guarding us.
~ from the Residents
of Richmond Charities
~ Almshouses ~*

2020

Entertainment Quiz



by Richard Pyne, Trustee

I love writing quizzes and have appeared on several TV quiz programmes in the past. I thought residents might enjoy questions from a recent quiz which I did for friends.

1. Which ITV comedy drama series is set in the fictional Cornish village of Portwenn?
2. Which 18 year old singer will perform the opening song to the latest James Bond film *No Time To Die*?
3. Which is the longest running musical in the history of West End theatre?
4. In the film *Saving Private Ryan*, who played Private Ryan?
5. What title is shared by Beethoven's sixth symphony and Ralph Vaughan Williams' third symphony?
6. Which novel by Charles Dickens has as its central plotline the long-running Chancery court case of Jarndyce vs Jarndyce?
7. The London 2012 Olympics opening ceremony was directed by which Academy Award winning British film director?
8. Which well-known singer won the Best Supporting Actor Oscar in 1953 for his role in the film *From Here To Eternity*?

Answers on page 10.

Credits

Editor: Juliet Ames-Lewis

Design: Chantal Richards

Songs and Poetry



by David Thomas

Thinking about the regulations we have all been under, and being a music lover, I began to muse on record companies reissuing appropriate recordings from the past. Here are a few, and you might like to think of some more yourselves:

Alone Again (Naturally) by Gilbert O'Sullivan,
Don't Stand So Close To Me by The Police,
The Boy in The Bubble by Paul Simon,
I Can't Explain by The Who.

Also, following on from Nigel recently, I too have a liking for the poetry of Emily Dickinson. Here's one that is a favourite of mine, a gentle poem that reminds each of us that we are all unique, and that we may each flourish in The Creator's good time. (gardeners also take note!).

Poem No 442 by Emily Dickinson

God made a little Gentian-
It tried-to be a Rose-
And failed-and all the Summer laughed-
But just before the Snows-

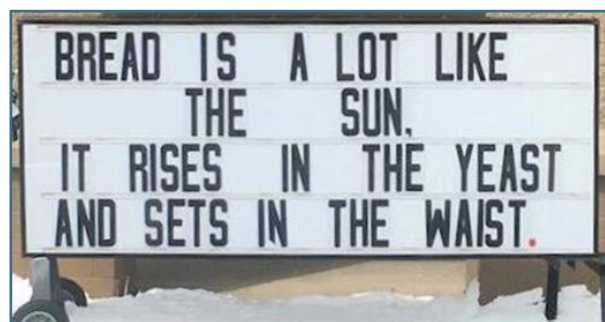
There rose a Purple Creature-
That ravished all the Hill-
And Summer hid her Forehead-
And Mockery-was still-

I Opened a Book

"I opened a **book** and in I strode.
Now nobody can find me.
I've left my chair, my house, my road,
My town and my world behind me.
I'm wearing the cloak, I've slipped on the ring,
I've swallowed the magic potion.
I've fought with a dragon, dined with a king
And dived in a bottomless ocean.
I opened a book and made some friends.
I shared their tears and laughter
And followed their road with its bumps and bends
To the happily ever after.
I finished my book and out I came.
The cloak can no longer hide me.
My chair and my house are just the same,
But I have a **book** inside me."

— Julia Donaldson

**SO IF A COW
DOESN'T PRODUCE
MILK, IS IT A MILK
DUD OR AN UDDER
FAILURE?**



Sports and Games Quiz



by Richard Pyne



1. How many points are awarded for a converted try in a Rugby Union match?

2. In golf, there are four major tournaments – The Open, The US Open, the Masters and the USPGA Championship. Which golfer holds the record of winning 18 of these majors?

3) Which Premier League football team plays its home matches at the Vitality Stadium?

4) How many players are there in a netball team?

5) In snooker, how many points are awarded for potting the blue ball?

6) In games of bridge or whist, what name is given to a hand that contains no card greater than a nine?

7) In 2017, Jamie Murray won the Wimbledon and US Open mixed doubles tournaments playing with which player?

8) In the 2016 Olympic Games, Sophie Hitchin became the first British athlete to win a medal in which athletic field event?

Answers on page 10.

History Quiz: In This Week: 22-28 June

22. Married to Rachel Weisz on **22 June 2011**, this British actor is best known as the British secret agent “James Bond”. Who is he?

23. On **23 June 2014**, a painting by this artist was sold at auction for US\$54 million. This painter was a French Impressionist painter, focussing on nature and plein air landscape painting. He lived in Giverny, France in a large house and a vast landscape with ponds. Who is he?

24. On **24 June 2018**, women in this Islamic country were allowed to drive for the first time. Which country is this?

25. Born in Montihari, India on **25 June 1903**. He was an English novelist and essayist, journalist and critic. His work was characterised by social criticism, opposition to totalitarianism, and outspoken support of democratic socialism. His most famous two books were published in 1945 and 1949. He died age 46 of tuberculosis. Who was he?

26. On **26 June 1977**, this singer made the last performance of his career in Indianapolis. An icon of the 20th Century, he died aged 42 and rests in Graceland, Tennessee. Who is he?



27. On **27 June 2001**, this actress died and was later cremated at Putney Vale Crematorium. She trained at RADA and was most famous for her roles in Carry on Nurse, Carry on Cleo and Carry on Camping. Her autobiography is called High Spirits. Who was she?

28. This man and his wife were assassinated at Sarajevo, on **28 June 1914**. This assassination started a conflict between the Austro-Hungarian government and Serbia that escalated into World War I. Who was he?

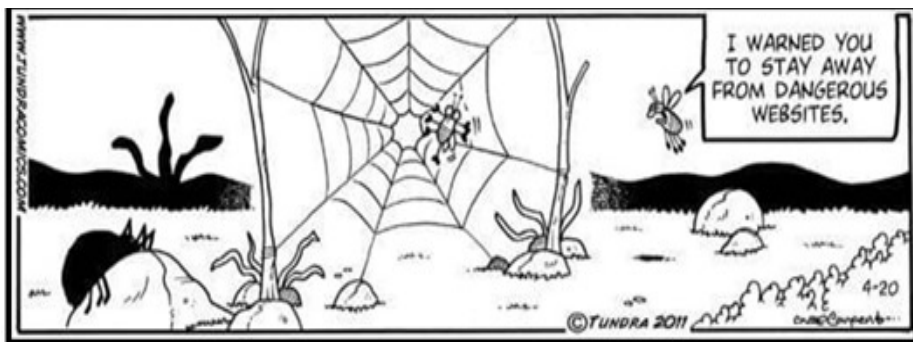
Answers on page 10.

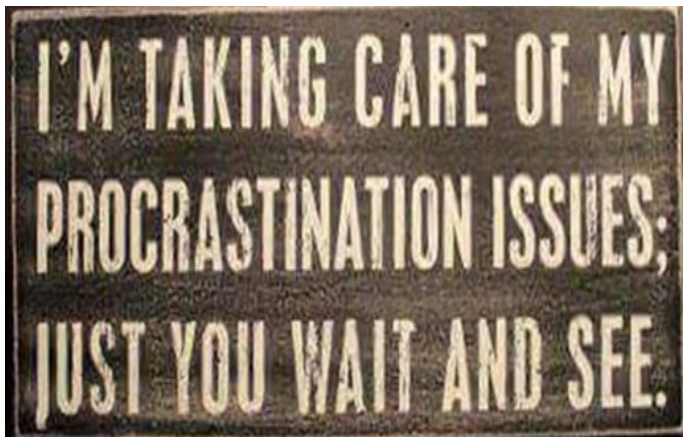
Wordsearch - ALMSHOUSE NEWS

E	E	D	G	N	E	A	H	P	T	S	E
N	M	R	N	T	L	T	C	O	I	A	H
E	M	A	I	R	B	N	T	I	P	P	O
W	E	G	N	O	A	U	A	N	P	A	L
S	R	O	R	S	N	H	W	T	I	N	B
N	D	N	O	D	E	N	G	L	N	O	Y
I	A	S	M	A	T	I	N	E	G	R	C
G	L	D	S	E	I	A	I	S	P	A	I
H	E	E	I	H	G	G	R	S	O	M	T
T	I	N	H	G	O	R	P	N	I	A	Y
T	E	I	T	G	L	A	S	A	N	H	S
D	B	N	D	E	F	B	I	H	T	N	G
D	R	E	W	M	A	R	R	S	H	O	W
S	K	E	D	S	I	N	G	E	R	S	D

FLOGIT
 NEWSNIGHT
 ANDREW MARR SHOW
 HOLBY CITY
 EASTENDERS
 MASKED SINGER
 POINTLESS
 DRAGONS DEN
 SPRINGWATCH
 THIS MORNING
 EGGHEADS
 BARGAIN HUNT
 PANORAMA
 EMMERDALE
 POLITICS LIVE
 TIPPING POINT
 TENABLE

**I AM SO OLD THAT,
 WHEN I WAS A KID,
 WE ACTUALLY HAD
 TO WIN TO GET A
 TROPHY!**





Answers. Page 5. Entertainment Quiz. 1. Doc Martin. 2. Billie Eilish. 3. Les Miserables. 4. Matt Damon. 5. Pastoral. 6. Bleak House. 7. Danny Boyle. 8. Frank Sinatra.

Answers. Page 7. Sports and Games Quiz. 1. Seven. 2. Jack Nicklaus. 3. Bournemouth. 4. Seven. 5. Five. 6. Yarborough. 7. Martina Hingis. 8. Hammer

Answers. Page 8. History Quiz: In This Week: 22-28 June. 22. Daniel Craig. 23. Claude Monet. 24. Saudi Arabia. 25. George Orwell. 26. Elvis Presley. 27. Joan Sims. 28. Archduke Francis Ferdinand.

Lest We Forget



by Leslie Cook

Opposite Church Estate Almshouses stands Peldon Court, thanks to the Luftwaffe. This nine-storey block rose on the site of Peldon Avenue.

At 2.40 am on 20 September 1940, massive parachute bombs landed on the houses here and on part of Courtlands. Twenty-six people were killed. Most distressing was the fate of the Danby family. The father, a policeman, was

first on the scene – only to learn that his three teenage daughters had been killed, found huddled together. Their mother died soon after from her injuries. Such grief. A young son, who had taken shelter under the stairs, survived.

And let the statistics covering Richmond and district during this conflict speak:

KILLED 97 men, women and children

INJURED 397 people

HOUSING 297 demolished, 272 severely damaged

RENDERED HOMELESS 762 people

	NOW	THEN
Shopping	Volunteers available	Rationing, shortages, queueing for hours
Social distancing	Two metres	10,000 miles (if in Royal Navy)
Exercise	Optional	Running to an air raid shelter
Children	At home	Sent away to strangers

Feeling better?

Poetry Corner



by Nigel Davis

Serge Lourie, one of the trustees (glad you are fully recovered, Serge!), is among other things also a trustee of a small charity called Poems in the Waiting Room. This charity arranges for printed cards containing poems to be placed in GP's surgeries for people awaiting appointments (in the times when you could actually go to a surgery) so that they could read them if so minded. A very good idea. I gather that all the poems are carefully vetted

to ensure they are not distressing or uncomfortable!

I think this one, by W.B. Yeats (1865-1939), would fit the bill. Yeats was a giant of 20th Century poetry, generally considered a modernist. But this famous early poem of his is scarcely typical of him. The poet, from a London street, reflects on the place in County Sligo in Western Ireland where he would holiday as a child. (He was in fact also buried in County Sligo.) A lovely, nostalgic poem – though Yeats was churlish enough somewhat to resent in later life its continuing popularity, since he did not consider it truly representative of his work. Who cares?

The Lake Isle of Innisfree

by W.B. Yeats

I will arise and go now, and go to Innisfree,
And a small cabin build there, of clay and wattles made;
Nine bean-rows will I have there, a hive for the honey-bee,
And live alone in the bee-loud glade.

And I shall have some peace there, for peace comes dropping slow,
Dropping from the veils of the morning to where the cricket sings;
There midnight's all a glimmer, and noon a purple glow,
And evening full of the linnet's wings.

I will arise and go now, for always night and day
I hear lake water lapping with low sounds by the shore;
While I stand on the roadway, or on the pavements grey,
I hear it in the deep heart's core.